



MONTHLY BULLETIN

July 2009

Number 182

HIGHLIGHTS

(Percentages refer to year-on-year variations unless otherwise specified)

The BDL coincident indicator stood at 230.2 in July 2009, compared with 229.0 in the previous month and 201.9 in July 2008. The balance of payments recorded during the month a surplus equivalent to USD 1,246.0 million. Year-on-year, the consolidated balance sheet of commercial banks increased by 16.9%, and the deposit dollarization rate declined to 66.4% at end-July. On the Lebanese pound, bank lending rates retreated, while deposit rates rose slightly. On the US dollar, both lending and deposit rates remained unchanged in July 2009.

- ▲ The **balance of payments** posted a surplus equivalent to USD 1,246.0 million in July 2009. This was reflected in a rise in the net foreign assets of the Banque du Liban by an amount of USD 1,391.6 million, while those of banks and financial institutions dropped by USD 145.6 million. In the year to July, the BOP registered a record cumulative surplus of USD 3,347.4 million, compared with a surplus of USD 1,611.2 million in the same period of 2008.
- ▲ According to figures released by the Ministry of Finance, net total **public debt** was up by LBP 107.0 billion in July 2009, reaching LBP 64,894 billion at the end of the month. Year-on-year, this debt increased by 6.2% at end-July, compared with 6.4% at end-June and end-May. In the year to July, it rose by an amount of LBP 2,332 billion, or 3.7%, compared with LBP 2,274 billion or 3.9% in the same period of 2008. The LBP-denominated public debt expanded by a monthly LBP 191 billion, reaching LBP 32,793 billion at end-July; year-on-year, it grew by 14.3%, and in the year to July by 6.9%. As for the foreign-currency-denominated public debt, it fell by USD 56 million during the month, standing at USD 21,294 million at end-July.
- ▲ **Gross foreign-currency reserves** of the Banque du Liban attained USD 24,841.8 million at end-July 2009, and total foreign assets, including gold, reached USD 33,462.8 million. The average US dollar exchange rate remained stable on the domestic market, standing at LBP 1,507.5 in July 2009.
- ▲ **Interest rates** declined in July 2009 on all categories of Treasury bills and bonds, except for the three-month category whose yield stabilized at 4.94%, with no change from end-June. On the other categories, yields stood as follows: 6.42% on the six-month (-19 basis points), 6.64% on the one-year (-25 basis points), 7.30% on the two-year (-26 basis points) and 8.20% on the three-year (-32 basis points). On the Lebanese pound, bank lending rates decreased during the month, while deposit rates registered a slight increase. Thus, the weighted average lending rate fell to 9.43% in July, compared with 9.76% in June and 9.79% in May, while the average deposit rate reached 7.02%, up from 6.96% in June and 7.06% in May. On the US dollar, bank interest rates remained almost unchanged in July, as the weighted average lending rate stood at 7.24%, as in the previous month, and the average deposit rate reached 3.19%, compared with 3.18% in June.
- ▲ The money stock continued to record high growth rates. In July, the **monetary aggregate M3** expanded by 2.0%, the equivalent of 2,245 billion Lebanese pounds; year-on-year, it grew by 16.7%, compared with 17.5% at end-June and 17.4% at end-May. All counterparts of M3 contributed to its expansion; however, the rise in net foreign assets remained the main factor, followed by the net claims on public sector and by the bank credits to the private sector. Regarding M3 components, the LBP money stock, M2, continued to rise significantly due to the continuous propensity to save in the national currency. Thus M2 increased in July by 3.6% (+LBP 1,560 billion), compared with 3.3% in June (+LBP 1,383 billion), in par with an increase in the foreign-currency stock M3-M2 that grew by 2.4%, compared with 3.1% in the previous month.
- ▲ The **consolidated balance sheet** of commercial banks rose year-on-year by 16.9%, reaching LBP 158,867 billion at end-July. Resident and non-resident private sector deposits increased by 18.2%, and credits to the private sector by 11.6%. The dollarization rate of bank deposits declined from 67.0% at-end June 2009 to 66.4% at end-July, compared with 74.0% at end-July 2008.
- ▲ The **trade** deficit narrowed year-on-year by 7.1%, standing at USD 1,240.3 million in July compared with USD 1,335.2 million a year earlier. In value, imports and exports reached, during the month, USD 1,469.9 million and USD 229.6 million respectively, declining year on year by 10.6% and 25.5%.
- ▲ The volume of **cement deliveries**, indicator of the construction sector's current activity, expanded by 32.3%, while the area of **construction permits**, indicator of its potential activity, regressed by 43.0%.
- ▲ Year-on-year, **power production** rose by 9.1%, reaching 1,112.7 million kWh during the month.
- ▲ At the **Beirut International Airport**, total plane traffic and passenger flow registered an increase of 27.6% and 28.0% respectively, as the number of incoming and departing passengers rose by 27.4% and 30.2%, while that of and transiting ones fell by 39.3%. Airfreight grew by 5.9%.
- ▲ In July 2009, the number of ships at the **Port of Beirut** and the volume of maritime freight progressed year-on-year by 18.1% and 13.6% respectively.

DIAGNOSIS

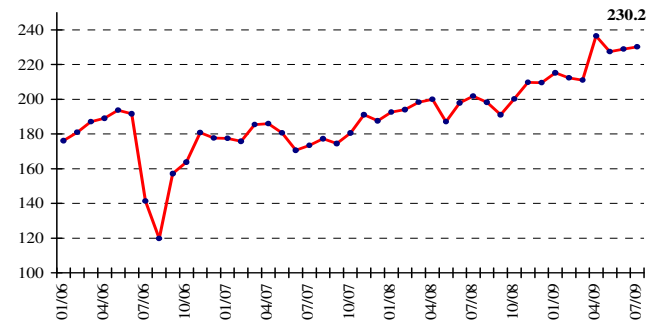
THE BDL COINCIDENT INDICATOR

The BDL coincident indicator stood at 230.2 in July 2009, compared with 229.0 in the previous month and 201.9 in July 2008, improving annually by 14.0%.

🌱 **Coincident Indicator** (Average 1993=100)

	Index	Monthly Changes (%)	Annual Changes (%)
July-2008	201.9	2.0	16.4
Aug-2008	198.3	-1.8	11.9
Sep-2008	191.0	-3.7	9.5
Oct-2008	200.2	4.8	10.9
Nov-2008	209.8	4.8	9.8
Dec-2008	209.6	-0.1	11.7
Jan-2009	215.3	2.7	11.8
Feb-2009	212.4	-1.4	9.5
Mar-2009	211.1	-0.6	6.4
Apr-2009	236.5	12.0	18.3
May-2009	227.5	-3.8	21.6
June-2009	229.0	0.7	15.7
July-2009	230.2	0.5	14.0

Coincident Indicator



CLEARING HOUSE ACTIVITY

In July 2009, the total value of cleared checks increased by a slight 0.5%. The value of checks in Lebanese pound was up by 21.2%, while that of checks in foreign currencies fell by 3.6%. From the total of cleared checks, the share of foreign-currency-denominated checks reached 80.0%, decreasing by 4.1%.

During the month, the share of returned checks rose annually by 16.1%, accounting for 1.8% of the total value of checks at end-July.

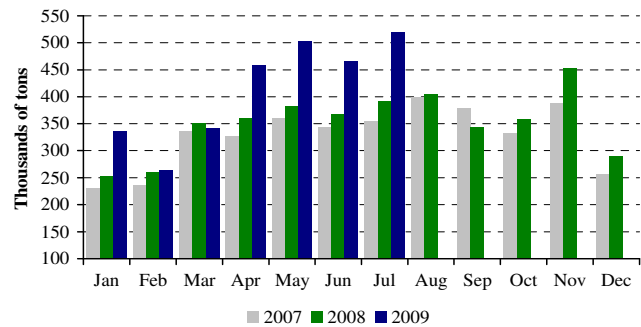
REAL SECTOR

CONSTRUCTION AND REAL ESTATE

The volume of cement deliveries, indicator of the construction sector's current activity, expanded by 32.3%, while the area of construction permits, indicator

of its potential activity, dropped by 43.0%.

Cement Deliveries



Source: Cement companies

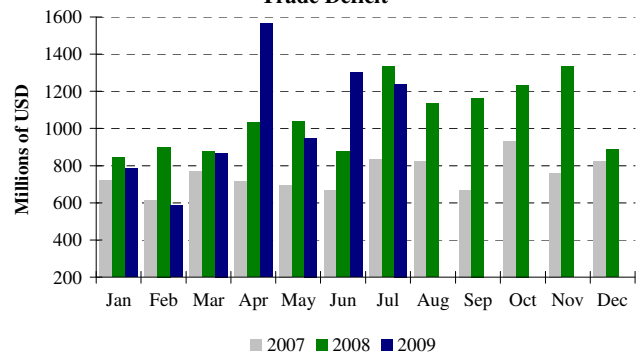
Real estate fees collected during the month declined by 5.5%, reaching LBP 55.5 billion.

FOREIGN TRADE

The trade deficit narrowed year-on-year by 7.1%, standing at USD 1,240.3 million in July compared with USD 1,335.2 million a year earlier. In value, imports and exports reached, during the month, USD 1,469.9 million and USD 229.6 million respectively, declining year on year by 10.6% and 25.5%.

Customs duties collected during the month increased by 89.5%, amounting to LBP 257.2 billion

Trade Deficit



Source: Customs Higher Council

In the year to July 2009, the shares of our imports from major source countries were as follows: France 11.5%, United States 9.5%, China 8.7%, Germany 7.7% and Italy 7.3%.

In July 2009, these shares were as follows:

🌱 **Imports by Origin** (millions USD)

	July 08	% of total	July 09	% of total
United States	168.3	10.2	166.8	11.3
China	154.1	9.4	120.5	8.2
Germany	82.7	5.0	118.2	8.0
Italie	93.4	5.7	116.1	7.9
France	157.0	9.6	91.9	6.3
Other countries	988.0	60.1	856.5	58.3
Total imports	1,643.4	100	1,469.9	100

▲ **Main Indicators** (Year-on-year changes, in %)

	Dec-2007	Avg-2007	July-2008	Dec-2008	Avg-2008	June-2009	July-2009
Cleared checks in Lebanese pounds ¹							
(in millions of LBP)	1,028,188	1,056,253	1,278,696	1,252,994	1,174,283	1,315,931	1,549,459
Variation in %	1.94	16.46	20.10	21.86	11.17	10.45	21.17
Cleared checks in foreign currencies ^{1**}							
(in millions of LBP)	2,767	2,491	4,266	3,184	3,596	3,661	4,115
Variation in %	31.34	18.28	73.64	15.07	44.36	-8.12	-3.56
Total cleared checks ^{**}							
(in millions of LBP)	5,200,117	4,811,232	7,710,346	6,053,518	6,595,157	6,835,599	7,752,106
Requests for information at the "Centrale des Risques" ¹							
Total	7,173	10,473	12,969	7,626	12,190	14,295	16,258
Variation in %	-3.52	20.69	25.28	6.32	16.39	4.82	25.36
Construction permits ^{2**}							
(in square meters)	1,095,304	753,134	976,355	5,265,200	1,335,294	2,024,869	556,405
Variation in %	24.89	3.97	32.58	380.71	77.30	94.17	-43.01
Cement deliveries ^{3**}							
(in tons)	257,049	328,745	392,386	289,406	351,605	464,848	519,078
Variation in %	-8.04	15.25	10.84	12.59	6.95	26.08	32.29
Collected real estate fees ⁴							
(in millions of LBP)	57,334	33,843	58,740	75,943	51,918	51,816	55,525
Variation in %	44.87	34.85	77.86	32.46	53.41	-3.85	-5.47
Total Imports ^{5***}							
(in millions of LBP)	1,604,496	1,484,794	2,478,213	1,712,062	2,027,840	2,339,249	2,216,624
Variation in %	17.64	25.73	56.39	6.70	36.57	29.18	-10.56
Total Exports ^{5@**}							
(in millions of LBP)	363,840	353,918	464,731	378,063	437,108	374,814	346,261
Variation in %	17.30	23.39	42.09	3.91	23.51	-23.72	-25.49
Trade Deficit ^{**}	1,240,657	1,130,876	2,013,482	1,333,999	1,590,733	1,964,435	1,870,363
Variation in %	17.74	26.48	60.11	7.52	40.66	48.89	-7.11
Customs receipts ^{5*}							
(in millions of LBP)	98,717	109,708	135,744	213,749	139,766	232,273	257,216
Variation in %	-14.03	15.86	27.01	116.53	27.40	78.29	89.49
Electricity production (EDL network) ⁶							
(in millions of KWh)	913	879	1,020	976	932	1,056	1,113
Variation in %	7.79	3.25	7.79	6.88	6.07	26.59	9.13
Imports of petroleum derivatives ^{7***}							
(in metric tons)	379,142	296,690	413,274	379,588	338,321	385,068	484,509
Variation in %	26.96	-13.66	14.76	0.12	14.03	20.36	17.24
Freight at the Port of Beirut ^{8**}							
Total	450,377	445,925	487,233	509,831	493,121	589,593	553,563
Variation in %	9.18	23.24	2.75	13.20	10.58	22.88	13.61
Freight incoming (tons)	370,635	360,498	424,610	433,908	412,130	521,059	477,062
Freight outgoing (tons)	69,849	75,372	49,445	57,425	68,327	53,415	61,864
Transit and free zone (tons)	9,893	10,056	13,178	18,498	12,664	15,119	14,637
Flow of passengers (B.I.A.) ⁹							
Total	334,486	284,070	485,769	419,329	340,445	460,519	621,522
Variation in %	25.73	20.66	36.56	25.37	19.85	26.58	27.95
Arrival	191,280	139,777	283,927	238,005	168,796	284,799	361,626
Variation in %	38.52	14.53	43.91	24.43	20.76	26.60	27.37
Departure	138,544	137,426	197,814	178,486	167,834	173,422	257,450
Variation in %	17.76	29.33	30.71	28.83	22.13	29.28	30.15
Transit	4,662	6,867	4,028	2,838	3,815	2,298	2,446
Variation in %	-54.71	-3.66	-43.24	-39.12	-44.45	-51.33	-39.28

* Since July 1995, the customs dollar (LBP 800) is replaced by the official dollar exchange rate. ** Updated figures by the private sector. *** Starting January 1, 1997 preliminary data is updated to include both public and private sectors. @ Since the beginning of 1997, exports figures exclude the nominal values of Banknotes and travelers checks exported from Lebanon.

¹BDL. ²Association of Engineers (Beirut, Tripoli). ³Cement Companies. ⁴Ministry of Finance. ⁵Customs Council. ⁶EDL. ⁷General Directorate of Petroleum. ⁸Port of Beirut. ⁹Beirut International Airport.

In the year to July 2009, the shares of our exports to major destination countries were as follows: Switzerland 20.6%, Syria 10.2%, United Arab Emirates 9.3%, Iraq 8.6% and Saudi Arabia 7.4%.

In July 2009, these shares were as follows:

♣ **Exports by Destination** (millions USD)

	July 08	% of total	July 09	% of total
UAE	29.4	9.5	26.8	11.7
Saudi Arabia	17.3	5.6	21.7	9.5
Syria	18.3	5.9	19.9	8.7
Iraq	26.0	8.4	19.0	8.3
Switzerland	24.5	7.9	17.9	7.8
Other countries	192.8	62.6	124.3	54.1
Total exports	308.2	100	229.6	100

♣ **Imports** (millions USD)

Sections	Jan-July 2008	% of Total	Jan-July 2009	% of Total
Food & Beverages	1,295.2	14.5	1,398.9	15.0
Textiles	329.3	3.7	373.9	4.0
Leather, Plastics & Rubber	29.6	0.3	34.9	0.4
Wood & wood products	124.8	1.4	122.8	1.3
Chemical & Pharmaceutical	782.1	8.7	784.6	8.4
Paper & paper products	218.0	2.4	199.0	2.1
Stone, Clay & cement	141.8	1.6	174.9	1.9
Metal & metal products	3,336.2	37.2	2,405.4	25.9
Machinery & Appliances	1,852.2	20.7	2,880.1	31.0
Jewelry	325.4	3.6	370.8	4.0
Other	523.2	5.8	555.2	6.0
Total	8,957.8	100	9,300.5	100

♣ **Exports** (millions USD)

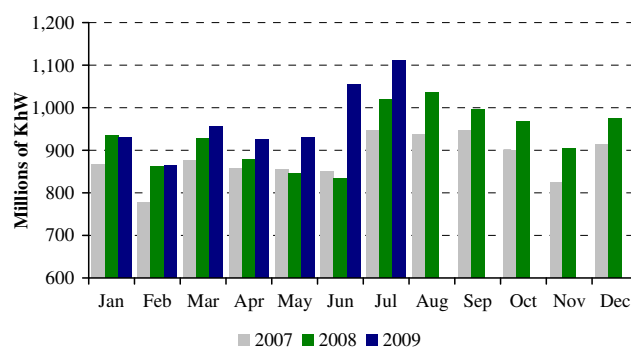
Sections	Jan-July 2008	% of Total	Jan-July 2009	% of Total
Food & Beverages	245.7	12.0	248.5	13.0
Textiles	66.2	3.2	60.1	3.1
Leather, Plastics & Rubber	7.0	0.3	5.0	0.3
Wood & wood products	19.1	0.9	18.9	1.0
Chemical & Pharmaceutical	222.4	10.8	120.7	6.3
Paper & paper products	115.1	5.6	134.4	7.0
Stone, Clay & cement	39.7	1.9	36.9	1.9
Metal & metal products	466.6	22.7	222.1	11.6
Machinery & Appliances	334.1	16.3	363.4	18.9
Jewelry	367.5	17.9	558.1	29.1
Other	170.7	8.3	149.4	7.8
Total	2,054.2	100	1,917.5	100

Source: Customs Higher Council

ENERGY

Year-on-year, power production rose by 9.1%, reaching 1,112.7 million kWh during the month.

Monthly Electricity Production



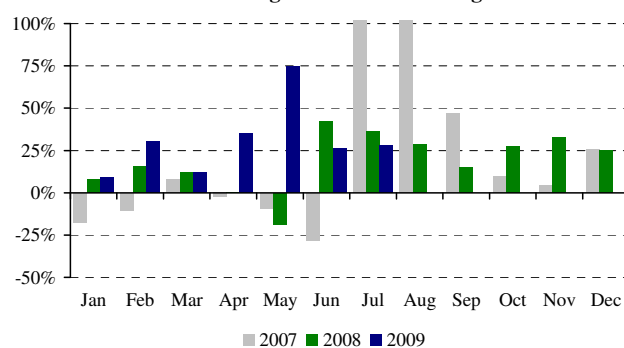
Source: Electricité du Liban

TRANSPORTATION

At the Beirut International Airport, total plane traffic and passenger flow registered an increase of 27.6% and 28.0% respectively, as the number of incoming and departing passengers rose by 27.4% and 30.2%, while that of and transiting ones fell by 39.3%.

Airfreight grew by 5.9%, as incoming freight improved by 13.1%, while outgoing freight decreased by 2.7%.

Annual Changes in Flow of Passengers



Source: Beirut International Airport

Year-on-year, the number of ships at the Port of Beirut progressed by 18.1% in July 2009. Likewise, the volume of maritime freight rose by 13.6%, as incoming, outgoing and transiting freight were respectively up by 12.4%, 25.1% and 11.1%.

MONETARY SECTOR

NET FOREIGN ASSETS OF THE BANKING SYSTEM

The balance of payments posted a surplus equivalent to USD 1,246.0 million in July 2009. This was reflected in a rise in the net foreign assets of the Banque du Liban by an amount of USD 1,391.6 million, while those of banks and financial institutions dropped by USD 145.6 million. In the year to July, the BOP registered a record cumulative surplus of USD 3,347.4 million, compared with a surplus of USD 1,611.2 million in the same period of 2008.

CENTRAL BANK FOREIGN CURRENCY RESERVES

Gross foreign-currency reserves of the Banque du Liban attained USD 24,841.8 million at end-July 2009, and total foreign assets, including gold, reached USD 33,462.8 million. The average US dollar exchange rate remained stable on the domestic market, standing at LBP 1,507.5 in July 2009.

INTEREST RATES

Interest rates declined in July 2009 on all categories of Treasury bills and bonds, except for the three-month category whose yield stabilized at 4.94%, with no change from end-June. On the other categories, yields stood as follows: 6.42% on the six-month (-19 basis points), 6.64% on the one-year (-25 basis points), 7.30% on the two-year (-26 basis points), and 8.20% on the three-year (-32 basis points).

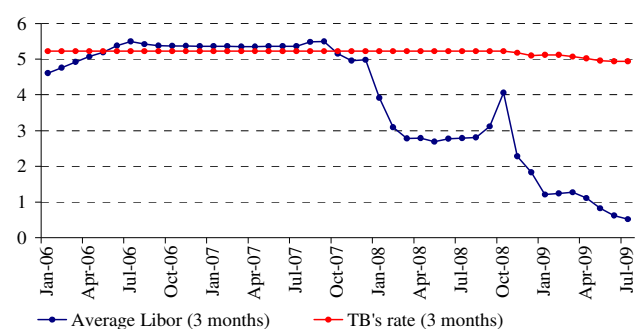
On the Lebanese pound, bank lending rates decreased during the month, while deposit rates registered a slight increase. Thus, the weighted average lending rate fell to 9.43% in July, compared with 9.76% in June and 9.79% in May, while the average deposit rate reached 7.02%, up from 6.96% in June and 7.06% in May.

On the US dollar, bank interest rates remained almost unchanged in July, as the weighted average lending rate stood at 7.24%, as in the previous month, and the average deposit rate reached 3.19%, compared with 3.18% in June. As a result, the spread between the LBP and USD lending rates narrowed from 2.52 points in June to 2.19 points in July, while the spread between the LBP and USD deposit rates expanded from 3.78 points to 3.83 points during the same period.

It is noteworthy that the three-month Libor rate continued to decrease, standing at 0.52% in July, compared with 0.62% in June and 0.82% in May.

Yields on the certificates of deposit issued by the Central Bank recorded no change in July 2009, standing on the 45-day and 60-day categories at 4.40% and 4.89% respectively.

Spread between 3-month TBs & Libor rate



On the other hand, the Banque du Liban maintained the discount and Repo rates at 12.00% each, as adopted since January 2005.

MONETARY AGGREGATES

The money stock continued to record high growth rates.

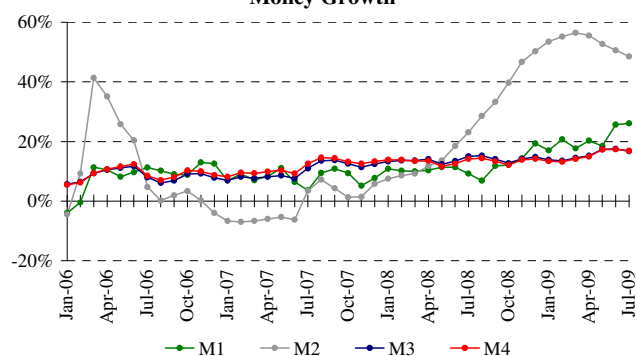
In July, the monetary aggregate M3 expanded by 2.0%, the equivalent of 2,245 billion Lebanese pounds; year-on-year, it grew by 16.7%, compared with 17.5% at end-June and 17.4% at end-May. All counterparts of M3 contributed to its expansion; however, the rise in net foreign assets remained the main factor, followed by the net claims on public sector and by the bank credits to the private sector.

Regarding M3 components, the LBP money stock, M2, continued to rise significantly due to the continuous propensity to save in the national currency. Thus M2 increased in July by 3.6% (+LBP 1,560 billion), compared with 3.3% in June (+LBP 1,383 billion), in par with an increase in the foreign-currency stock M3-M2 that grew by 2.4%, compared with 3.1% in the previous month.

▲ Year-on-Year Changes in Money Components (in %)

	M1	M2	M3	M4
July-2008	9.22	23.13	15.02	14.17
Aug-2008	6.81	28.54	15.23	14.41
Sep-2008	11.82	33.27	14.04	13.34
Oct-2008	12.14	39.71	12.74	12.15
Nov-2008	14.29	46.73	14.18	13.84
Dec-2008	19.32	50.32	14.76	14.20
Jan-2009	17.05	53.49	13.84	13.37
Feb-2009	20.67	55.19	13.58	13.16
Mar-2009	17.65	56.45	14.51	14.15
Apr-2009	20.30	55.57	15.24	14.98
May-2009	18.43	52.71	17.43	17.30
June-2009	25.64	50.62	17.51	17.35
July-2009	26.03	48.49	16.73	16.91

Money Growth



PUBLIC DEBT

According to figures released by the Ministry of Finance, net total public debt was up by LBP 107.0 billion in July 2009, reaching LBP 64,894 billion at the end of the month. Year-on-year, this debt increased by 6.2% at end-July, compared with 6.4% at end-June and end-May. In the year to July, it rose by an amount of LBP 2,332 billion, or 3.7%, compared with LBP 2,274 billion or 3.9% in the same period of 2008.

The LBP-denominated public debt expanded by a monthly LBP 191 billion, reaching LBP 32,793 billion at end-July; year-on-year, it grew by 14.3%, and in the year to July by 6.9%.

As for the foreign-currency-denominated public debt, it fell by USD 56 million during the month, standing at USD 21,294 million at end-July.

✦ **Outstanding Treasury Bills by Maturity** (% of total)

	3 months	6 months	12 months	24 months and above
July-2008	0.01	2.40	1.15	96.44
Aug-2008	0.01	1.07	1.23	97.69
Sep-2008	0.01	1.29	1.63	97.07
Oct-2008	0.17	1.67	1.60	96.56
Nov-2008	0.26	3.07	1.73	94.94
Dec-2008	0.75	3.20	1.75	94.30
Jan-2009	1.07	3.46	1.92	93.55
Feb-2009	1.47	3.81	2.45	92.27
Mar-2009	1.75	3.77	2.92	91.56
Apr-2009	1.45	3.42	3.05	92.08
May-2009	1.16	2.03	3.16	93.65
June-2009	0.40	1.55	3.28	94.77
July-2009	0.24	1.83	3.52	94.41

BANKING ACTIVITY

CONSOLIDATED BALANCE SHEET

The consolidated balance sheet of commercial banks reached LBP 158,867 billion at end-July 2009, rising monthly by 1.70%, compared with 1.94% in June; year-on-year, it increased by 16.90%.

VOLUME OF CREDITS

a-Commercial Banks

Credits granted by commercial banks to the resident and non-resident private sector rose by 3.52% in July 2009, while recording no change in the previous month. Year-on-year, the volume of credits was up by 11.57%, amounting to LBP 40,677 billion at end-July 2009. They were distributed as follows:

- At end-July 2009, credits in Lebanese pound reached LBP 5,896 billion, a monthly increase of 2.65%, compared with 2.81% in June. Year-on-year, they grew by 28.13%, and their share from total bank credits stood at 14.49%, compared with 12.62% in July 2008.
- Credits in foreign currencies expanded by 3.66% in July 2009, following a 0.47% decrease in the previous month. Year-on-year, they rose by 9.17%, reaching USD 23,065 million at end-July 2009.

b-Investment Banks

Credits granted by investment banks reached LBP 1,344

billion at end-July 2009, as they rose monthly by 0.30%, compared with 0.38% in June 2009; compared to July 2008, they decreased by 0.25%.

VOLUME OF DEPOSITS

a-Commercial Banks

Resident and non-resident private sector deposits at commercial banks were up by 2.22% in July 2009, compared with 1.69% in the previous month. Year-on-year, the volume of deposits progressed by 18.19%, reaching LBP 132,188 billion at end-July. They were distributed as follows:

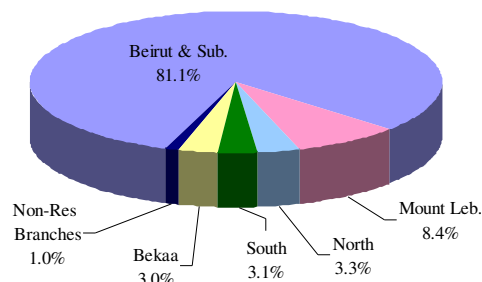
- Deposits in Lebanese pound amounted to LBP 44,412 billion at end-July 2009, improving monthly by 4.06%, compared with 2.90% in June. Year-on-year, they registered a 52.82% increase, accounting for 33.60% of total deposits, compared with 25.98% at end-July 2008.
- Deposits in foreign currencies rose by 1.32% in July 2009, compared with 1.10% in the previous month. Year-on-year, they grew by 6.03%, reaching USD 58,206 million at end-July.

b-Investment Banks

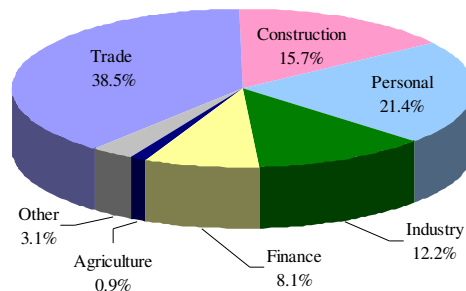
During the month, private sector deposits at investment banks expanded by 3.30%, following a decline of 1.50% in June. Year-on-year, their volume increased by 43.46%, from LBP 3,317 billion at end-July 2008 to LBP 4,759 billion at end-July 2009.

DISTRIBUTION OF CREDITS

Distribution of Credits by Region



Distribution of Credits by Sector



CREDIT-DEPOSIT RATIO

The total credits/total deposits ratio stood at 30.77% at end-July 2009, compared with 32.60% at end-July 2008. Credits were distributed as follows:

- Credit/deposit ratio in Lebanese pound: 13.27%, compared with 15.83%.
- Credit/deposit ratio in foreign currencies: 39.63%, compared with 38.48%.

SHAREHOLDERS' FUNDS

Shareholders' equity increased by 0.30% in July 2009, compared with 2.28% in June 2009. Compared with a year earlier, it rose by 12.76%, reaching LBP 11,356 billion in July 2009.

The capital/total asset ratio in commercial banks was down to 7.15% at end-July 2009, compared with 7.25% at end-June 2009 and 7.41% at end-July 2008.

Similarly, the capital/total deposit ratio regressed to 8.59% at end-July 2009, compared with 8.76% at end-June 2009 and 9.00% at end-July 2008.

As for the capital/total credit ratio, it declined to 27.92% at end-July 2009, compared with 28.81% at end-June 2009 and 27.62% at end-July 2008.

DOLLARIZATION

At end-July 2009, the dollarization rate of bank deposits fell to 66.40%, compared with 67.00% at end-June 2009 and 74.02% at end-July 2008.

In contrast, the dollarization rate of bank credits increased to 85.51% at end-July 2009, compared with 85.38% at end-June 2009 and 87.38% at end-July 2008.

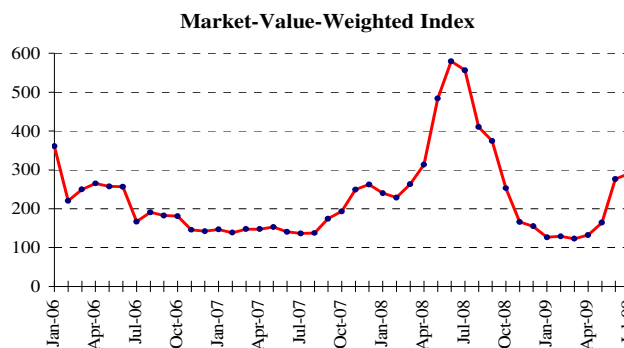
FINANCIAL MARKETS

The BDL market-value-weighted index registered a slight increase of 5.27% in July 2009, closing at 290.62 points, compared with 276.06 points in the previous month. In contrast, shares traded on the stock market recorded a decline in volume and in value.

On the domestic and international markets, no CD issue was launched during the month, while one fell due.

BDL Market-Value-Weighted Index (Jan-1996=100)

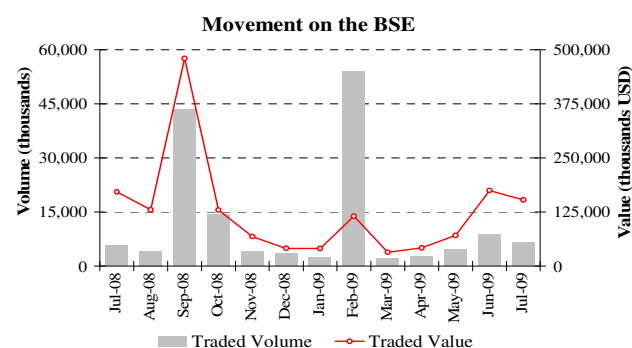
July 2008	555.89
August 2008	410.19
September 2008	374.11
October 2008	252.77
November 2008	165.79
December 2008	154.75
January 2009	126.27
February 2009	128.50
March 2009	122.46
April 2009	132.01
May 2009	163.78
June 2009	276.06
July 2009	290.62



BEIRUT STOCK EXCHANGE

Beirut Stock Exchange

Date	Traded Shares		Market Capitalization (billions USD)
	Volume (millions)	Value (millions USD)	
July-2008	5.69	171.61	17.21
Aug-2008	4.20	130.20	15.58
Sep-2008	43.38	479.81	15.17
Oct-2008	14.25	129.60	12.40
Nov-2008	4.10	68.64	10.65
Dec-2008	3.34	41.19	10.38
Jan-2009	2.56	40.95	9.53
Feb-2009	54.11	115.26	9.32
Mar-2009	2.06	32.10	9.24
Apr-2009	2.62	42.20	9.38
May-2009	4.53	70.68	10.10
June-2009	8.78	174.82	12.16
July-2009	6.49	153.03	12.40



Following the expiry of the Beirut Golden Income Fund's duration set at five years from the date of its final establishment, the Beirut Stock Exchange announced that trading the shares of the mentioned fund on the secondary market will cease as of the end of the trading session of July 7, 2009.

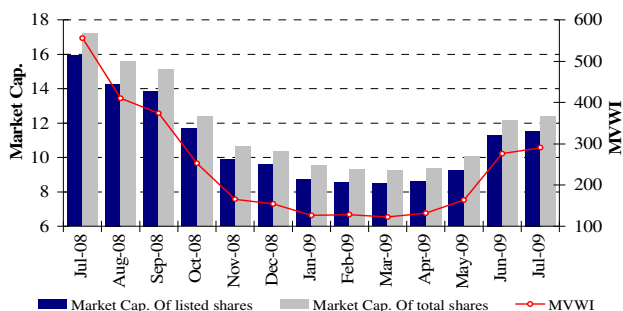
The volume of traded shares decreased by 26.03% in July 2009, reaching 6.493 million shares, compared with 8.778 millions in the previous month. Similarly, the value of these shares fell by 12.46% during the month,

attaining USD 153.034 million, compared with USD 174.824 million in June 2009.

As for the Treasury Eurobonds listed on the BSE, no transaction was effected neither in July nor in June.

Regarding the shares traded during the month, those of Solidere were leading in volume and value, with 80.09% and 85.60% of total trading, respectively.

Movement of the MVWI and Market Cap. on BSE



Market capitalization, which is computed by including the value of all listed and unlisted shares of the companies members of the Beirut Stock Exchange, rose monthly by 1.94%, reaching USD 12.397 billion in July 2009, compared with USD 12.161 billion in June.

Likewise, market capitalization of shares listed on the BSE improved by 2.16%, amounting to USD 11.557 billion in July 2009, compared with USD 11.313 billion in the previous month.

PREFERRED AND PRIMARY STOCKS

Issuer	Type	Price	Volume (thousands)	Value (millions \$)
BLOM Bank	Preferred Shares 2004	100 \$	750	75
BLOM Bank	Preferred Shares 2005	100 \$	1,000	100
Bank of Beirut	"C"	25 \$	2,920	73
Bank of Beirut	"D"	25 \$	4,000	100
BEMO Bank	Preferred Shares	100 \$	200	20
Audi-Saradar Bank	"C"	25 \$	4,000	100
Audi-Saradar Bank	"D"	100 \$	1,250	125
Byblos Bank	Preferred Shares 2008	100 \$	2,000	200
Byblos Bank	Primary Shares	1,200 LL	206,024	164

GLOBAL DEPOSITARY RECEIPT (GDR)

In July 2009, the prices of GDRs issued by Audi-Saradar Bank fell by 3.19%, ranging between USD 65.60 and USD 72.00. In contrast, the prices of GDRs issued by BLOM Bank and Byblos Bank were up by 12.34% and 4.40%, respectively, the former ranging between USD 71.10 and USD 82.00, and the latter between USD 89.00 and USD 97.00. Similarly, the prices of GDRs issued by Solidere rose by 6.00%, ranging

between USD 23.69 and USD 25.35.

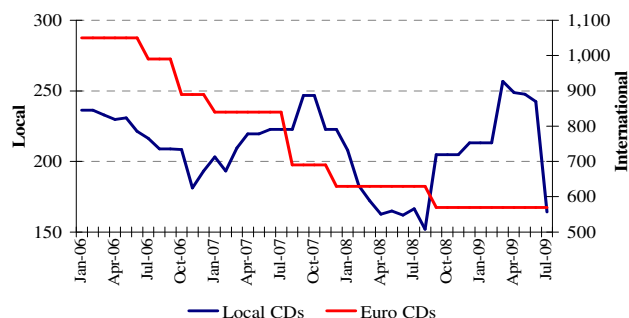
CERTIFICATES OF DEPOSIT

On July 1, 2009, one CD issue by Byblos Bank fell due for an amount of USD 78.054 million.

* Certificates of Deposit (millions USD)

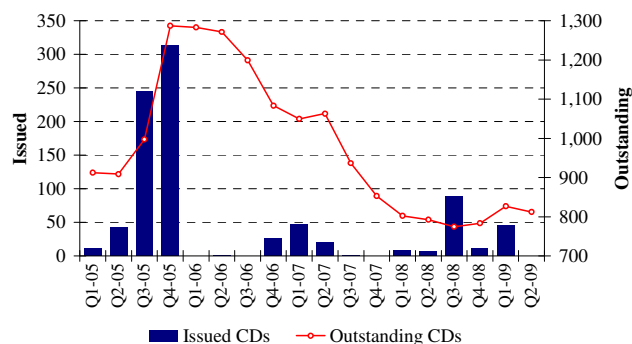
	Issued	Outstanding			Number of Banks
		Local	International	Total	
June 2009	-	242.4	570	812.4	6
July 2009	-	164.4	570	734.4	6

Outstanding Certificates of Deposit



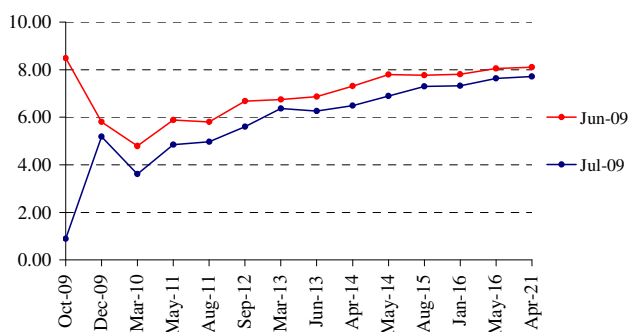
Consequently, the value of total outstanding CDs (domestic and international) declined by 9.61%, standing at USD 734.382 million (of which an amount of USD 164.382 million on the domestic market)

Issued and Outstanding CDs

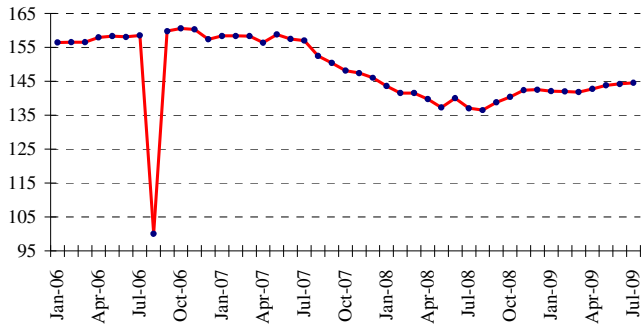


LEBANESE REPUBLIC FOREIGN CURRENCY BONDS

Yield Curve of Lebanese Sovereign Eurobonds in \$



Reuter LB Bond Index



The total value of the Lebanese Treasury Eurobonds increased from USD 18.434 billion at end-June 2009 to USD 18.441 billion at end-July 2009.

The Reuter index of the Lebanese Treasury Eurobonds stood at 144.55 points at end-July 2009, compared with 144.21 points at end-June.

LEBANESE BANKS' FOREIGN CURRENCY BONDS

During the month, the prices of subordinated notes issued by Byblos Bank remained unchanged.

Lebanese Republic Foreign Currency Bonds

	Maturity	Closing of June 2009			Closing of July 2009		
		Price	Yield	Spread	Price	Yield	Spread
3 years (USD 351.591 millions)	02/08/2009	-	-	-	-	-	-
10 years (USD 650 millions)	06/10/2009	100.50	8.49	830	101.63	0.89	7
5 years (USD 625 millions) floating rate	30/11/2009	98.75	7.59	265	99.38	6.45	189
5 years (USD 425 millions)	14/12/2009	100.50	5.81	542	100.62	5.19	493
6 years (USD 1,265 millions)	05/03/2010	101.50	4.79	441	102.00	3.62	339
5 years (USD 700 millions)	12/11/2010	-	-	-	-	-	-
5 years (USD 277.915 millions)	22/12/2010	-	-	-	-	-	-
5 years (LBP 400,000 millions)	30/03/2011	98.50	9.97	-	98.50	9.97	-
7 years (USD 1,000 millions)	20/05/2011	103.50	5.88	475	105.12	4.85	373
5 years (USD 750 millions)	02/08/2011	103.25	5.81	467	104.75	4.97	384
4 years (USD 600 millions)	19/03/2012	-	-	-	-	-	-
6 years (Euro 535.639 millions)	12/04/2012	99.50	6.06	429	101.00	5.45	383
5 years (USD 200 millions)	20/07/2012	-	-	-	-	-	-
8 years (USD 600 millions)	07/09/2012	103.00	6.68	504	106.00	5.61	400
5 years (USD 875 millions)	12/03/2013	107.59	6.75	532	108.75	6.37	476
8 years (USD 650 millions)	20/06/2013	106.00	6.87	523	108.00	6.26	467
8 years (USD 676.902 millions)	14/04/2014	100.25	7.31	476	103.50	6.49	396
6 years (USD 881.612 millions)	02/05/2014	104.75	7.80	525	108.38	6.89	436
7 years (USD 500 millions)	06/08/2015	103.50	7.77	457	105.75	7.30	414
15 years (USD 750 millions)	19/01/2016	103.50	7.81	461	106.00	7.32	416
15 years (USD 400 millions)	11/05/2016	118.50	8.05	486	120.75	7.64	447
8 years (USD 1,500 millions)	19/03/2017	-	-	-	-	-	-
10 years (USD 300 millions)	20/07/2017	-	-	-	-	-	-
15 years (USD 950 millions)	27/12/2017	-	-	-	-	-	-
15 years (USD 2,007.511 millions)	31/12/2017	-	-	-	-	-	-
15 years (USD 700 millions)	05/03/2018	-	-	-	-	-	-
15 years (USD 200 millions)	27/05/2018	-	-	-	-	-	-
15 years (USD 2,092.469 millions)	12/04/2021	109.75	7.87	532	104.13	7.71	420

1. MONETARY SURVEY

(end of period, in billions of Lebanese Pounds)

	Dec 2007	Jun 2008	Jul 2008	Dec 2008	Jun 2009	Jul 2009
Currency in Circulation	1,929.0	1,840.0	1,870.1	2,174.6	2,316.0	2,305.9
Sight Deposits in L.L.	1,649.1	1,860.2	1,914.6	2,094.7	2,332.9	2,464.1
M1	3,578.1	3,700.2	3,784.7	4,269.3	4,648.9	4,770.0
Other Deposits in L.L.	21,252.6	25,397.4	26,779.5	33,055.4	39,177.1	40,616.1
M2	24,830.7	29,097.6	30,564.2	37,324.7	43,826.0	45,386.1
Deposits in Foreign Currencies	65,279.1	66,632.0	67,728.1	66,099.3	68,677.0	69,361.8
Bonds	87.0	79.0	79.5	81.7	84.4	84.3
M3	90,196.7	95,808.5	98,371.8	103,505.7	112,587.4	114,832.2
M4*	95,809.7	101,371.5	103,995.8	109,411.7	118,963.4	121,578.2
Net Claims on Foreign Sector	36,394.1	38,333.4	40,255.1	42,168.9	46,292.1	48,089.8
Net Claims on Public Sector	40,917.0	40,998.9	41,010.8	42,844.6	46,474.8	46,512.7
Valuation Adjustment	-3,040.7	-4,582.0	-4,234.0	-3,601.6	-4,591.4	-4,536.4
Claims on Private Sector	27,736.0	31,357.5	31,828.4	33,482.4	35,566.9	35,870.2
Other Items Net	-11,809.6	-10,299.3	-10,488.4	-11,388.6	-11,155.1	-11,104.1
TOTAL	90,196.7	95,808.5	98,371.8	103,505.7	112,587.4	114,832.2

* M4 = M3 + Treasury Bills held by the non-banking system; M3 and M4 include Bonds starting July 1996

1.1 BANKING SYSTEM : ASSETS AND LIABILITIES IN GOLD AND FOREIGN CURRENCIES

(end of period, in millions of US dollars)

	Dec 2007	Jun 2008	Jul 2008	Dec 2008	Jun 2009	Jul 2009
Bank of Lebanon	20,131.4	23,470.8	24,856.6	27,768.1	32,256.3	33,082.4
Gold	7,639.8	8,613.7	8,390.0	8,031.7	8,663.5	8,621.0
Foreign Currencies Reserves	12,844.1	15,287.3	16,899.9	20,181.8	23,969.1	24,841.8
Foreign Liabilities	352.5	430.1	433.3	445.4	376.3	380.4
Commercial Banks	7,069.6	4,616.0	4,562.2	3,316.5	1,793.4	1,640.0
Claims on Non Resident Banks	14,553.2	12,198.7	12,012.5	11,389.7	12,731.8	12,050.6
Claims on Non Residents	2,672.5	3,527.5	3,728.3	3,978.3	3,632.1	4,352.5
Other Foreign Assets	3,484.0	3,944.4	4,017.4	3,759.1	3,814.8	3,945.8
Liabilities of Non Resident Banks	4,051.8	4,531.8	4,223.6	4,305.0	4,579.8	4,427.8
Deposits of Non Residents	9,588.3	10,522.8	10,972.4	11,505.6	13,805.5	14,281.1
Medium and Long Term Banks	-57.9	-115.3	-112.3	-128.9	-159.1	-151.7
Claims on Foreign Sector	208.4	195.7	206.9	208.7	280.2	299.0
Liabilities to the Foreign Sector	266.3	311.0	319.2	337.6	439.4	450.6

1.2 PRIVATE SECTOR DEPOSITS IN COMMERCIAL BANKS

(end of period, in billions of Lebanese Pounds)

	Dec 2007	Jun 2008	Jul 2008	Dec 2008	Jun 2009	Jul 2009
Deposits of Residents	86,980.76	92,810.96	95,306.97	99,907.85	108,499.08	110,658.83
- Deposits of Res. in L.L.	22,282.26	26,666.21	28,068.66	34,309.11	40,338.53	41,821.39
- Deposits of Res. In For. Curr.	64,698.50	66,144.75	67,238.31	65,598.74	68,160.55	68,837.44
Deposits of Non Residents	14,454.29	15,863.08	16,540.93	17,344.69	20,811.81	21,528.75
- Deposits of N. Res. in L.L.	704.72	901.94	993.42	1,366.97	2,339.99	2,591.06
- Deposits of N. Res. in For. Curr.	13,749.57	14,961.13	15,547.52	15,977.72	18,471.82	18,937.69
Total Deposits in L.L.	22,986.98	27,568.15	29,062.08	35,676.08	42,678.52	44,412.45
Total Deposits in For. Curr.	78,448.07	81,105.88	82,785.83	81,576.46	86,632.37	87,775.13
GRAND TOTAL	101,435.05	108,674.03	111,847.90	117,252.54	129,310.88	132,187.57

1.3 TRADE & BALANCE OF PAYMENT RESULTS

(in millions of US Dollars)

	Imports (C.I.F.)	Exports (F.O.B.)	Trade Balance	Central Bank	Banks	Balance of Payment **
2008 (Jan - Dec)	16,136.7	3,478.3	-12,658.3	7,282.6	-3,821.1	3,461.5
April	1,310.5	279.1	-1,031.4	576.7	-503.6	73.1
May	1,305.3	266.6	-1,038.7	485.0	-901.1	-416.1
June	1,200.8	325.8	-874.9	661.3	-21.6	639.7
July	1,643.4	308.2	-1,335.2	1,575.1	-46.7	1,528.4
August	1,416.2	282.5	-1,133.7	1,057.9	-655.8	402.1
September	1,470.1	306.4	-1,163.7	246.5	-46.7	199.8
December	1,135.3	250.7	-884.6	497.1	217.2	714.3
2009						
January	1,067.1	280.6	-786.5	675.2	-310.9	364.3
February	1,034.9	449.2	-585.7	761.4	-461.3	300.1
March	1,138.3	272.1	-866.1	347.9	-714.6	-366.7
April	1,797.1	230.8	-1,566.4	664.1	175.0	839.1
May	1,241.9	292.0	-950.0	809.1	-287.8	521.3
June	1,551.2	248.6	-1,302.7	383.8	59.5	443.3
July	1,469.9	229.6	-1,240.3	1,391.6	-145.6	1,246.0

NB: These values are subject to change.

** Valuation Adjustment from fluctuations of US dollar with respect to other foreign currencies is excluded; Net foreign assets of specialized banks and financial institutions are included, starting January 1995.

2. BALANCE SHEET OF BANK OF LEBANON

(end of period, in billions of Lebanese Pounds)

	Dec 2007	Jun 2008	Jul 2008	Dec 2008	Jun 2009	Jul 2009
Assets						
Foreign Assets	26,256.7	32,012.6	34,019.5	37,829.4	44,144.5	46,179.6
-Gold	11,517.0	12,985.1	12,648.0	12,107.8	13,060.2	12,996.2
-Foreign Currencies	14,739.8	19,027.5	21,371.5	25,721.6	31,084.4	33,183.4
-Other Foreign Assets						
Claims on Private Sector	297.5	309.2	307.7	305.3	319.6	327.6
Loans to Commercial Banks	1,690.4	1,693.1	1,630.6	1,543.1	1,771.2	1,759.1
Loans to Specialized Financial Corp.	0.3		5.2			
Loans to Public Sector	405.7	376.4	373.1	361.7	326.4	312.1
Securities Portfolio	13,302.8	12,720.7	12,120.5	13,932.7	16,036.1	15,388.4
Fixed Assets	435.3	437.8	434.2	409.0	418.7	419.7
Unclassified Assets	6,246.7	7,418.8	7,818.3	6,038.3	8,172.0	8,556.0
TOTAL	48,635.4	54,968.5	56,709.1	60,419.6	71,188.5	72,942.5
Liabilities						
Currency in Circulation outside BDL	2,191.0	2,160.0	2,187.5	2,498.3	2,683.4	2,673.9
Commercial Banks Deposits	27,300.7	30,470.1	32,084.6	36,193.1	46,116.8	46,627.4
Corporations Deposits	994.2	1,029.2	1,054.1	1,313.5	1,652.9	1,738.8
Private Sector Deposits	205.7	49.3	61.1	28.0	35.1	44.3
Public Sector Accounts	3,363.9	4,694.3	5,058.5	6,994.5	5,081.1	6,067.3
Valuation Adjustment	3,040.7	4,582.0	4,234.0	3,601.6	4,591.4	4,536.4
Foreign Liabilities	531.4	648.4	653.2	671.5	567.2	573.5
Special Long Term Liabilities	3,184.2	3,173.4	3,157.9	2,682.0	2,597.0	2,585.4
Securities other than shares	3,015.0	3,015.0	3,015.0	3,015.0	3,015.0	3,015.0
Capital Accounts	2,715.2	2,875.3	2,875.4	2,410.6	2,353.3	2,354.6
Unclassified Liabilities	2,093.4	2,271.3	2,327.8	1,011.4	2,495.3	2,725.9
TOTAL	48,635.4	54,968.5	56,709.1	60,419.6	71,188.5	72,942.5

3. CONSOLIDATED BALANCE SHEET OF COMMERCIAL BANKS

(end of period, in billions of Lebanese Pounds)

	Dec 2007	Jun 2008	Jul 2008	Dec 2008	Jun 2009	Jul 2009
Assets						
Reserves	29,851.4	33,474.2	34,792.9	39,113.4	49,166.8	49,762.7
Vault Cash	261.9	320.0	317.4	323.7	367.4	368.0
Deposits at Central Bank	29,589.4	33,154.2	34,475.5	38,789.7	48,799.4	49,394.8
Claims on Private Sector	26,761.8	30,372.4	30,839.8	31,750.5	33,820.7	34,116.0
In Lebanese Pounds	4,189.5	4,543.2	4,601.3	5,067.5	5,743.4	5,895.6
In Foreign Currencies	22,572.2	25,829.3	26,238.5	26,682.9	28,077.3	28,220.4
Claims on Public Sector	32,423.5	34,739.2	35,428.9	38,313.7	38,108.8	39,585.6
Claims on Foreign Sector	31,219.8	29,653.3	29,785.5	28,834.1	30,419.4	30,676.1
Fixed Assets	3,321.9	4,268.9	4,247.0	3,695.0	4,223.2	4,236.6
Unclassified Assets	421.1	831.8	802.3	383.2	468.6	490.1
TOTAL	123,999.4	133,339.8	135,896.4	142,090.0	156,207.5	158,867.2
Liabilities						
Resident Private Sector Deposits	86,980.8	92,811.0	95,307.0	99,907.9	108,499.1	110,658.8
Demand Deposits in L.L.	1,601.8	1,813.6	1,856.8	2,057.5	2,301.7	2,421.6
Time and Saving Deposits in L.L.	20,680.4	24,852.6	26,211.9	32,251.7	38,036.8	39,399.8
Deposits in Foreign Currencies	64,698.5	66,144.7	67,238.3	65,598.7	68,160.5	68,837.4
Public Sector Deposits	1,163.4	1,457.1	1,166.3	1,331.2	1,477.6	1,268.3
Non Resident Private Sector Deposits	14,454.3	15,863.1	16,540.9	17,344.7	20,811.8	21,528.7
Non Resident Financial Sect. Deposits	6,108.0	6,831.6	6,367.0	6,489.7	6,904.0	6,675.0
Other Financial Liabilities	90.6	135.9	89.3	92.9	99.4	99.0
Capital Accounts	9,438.7	9,995.3	10,071.2	10,705.3	11,322.5	11,356.1
Unclassified Liabilities	5,763.6	6,245.9	6,354.7	6,218.4	7,093.0	7,281.2
TOTAL	123,999.4	133,339.8	135,896.4	142,090.0	156,207.5	158,867.2

4.1 INTEREST RATES : COMMERCIAL BANKS

(in percent)

Period	Lending & Deposits Rates (LL)					Interbank Rates on Call (LL) End of Period	Lending & Deposits Rates (\$)					Libor 3-month Period Average
	Discount & Loans	Checking & Current Accounts	Savings at Call	Term Deposits	Average Rate on Deposits		Discount & Loans	Checking & Current Accounts	Savings at Call	Term Deposits	Average Rate on Deposits	
2008												
Apr	9.86	2.42	4.02	7.71	7.26	3.75	7.42	0.81	1.45	4.06	3.67	2.79
May	9.72	2.39	4.18	7.71	7.27	3.50	7.43	0.84	1.45	4.01	3.61	2.69
Jun	10.09	2.46	3.89	7.68	7.25	3.50	7.28	0.77	1.44	4.00	3.55	2.77
Jul	10.13	2.50	3.97	7.67	7.23	3.50	7.32	0.75	1.42	3.99	3.50	2.79
Aug	9.96	3.07	3.96	7.64	7.23	3.50	7.17	0.72	1.44	4.01	3.55	2.81
Sep	9.98	3.29	4.07	7.63	7.18	3.75	7.37	0.78	1.52	4.06	3.57	3.12
Oct	9.90	1.57	4.05	7.64	7.28	3.50	7.53	0.58	1.44	3.98	3.54	4.06
Nov	10.08	1.53	4.18	7.63	7.27	3.50	7.54	0.56	1.41	3.91	3.47	2.28
Dec	9.95	1.72	4.21	7.62	7.22	4.00	7.47	0.60	1.53	3.81	3.33	1.83
2009												
Jan	10.07	1.54	4.17	7.56	7.22	3.50	7.35	0.50	1.30	3.71	3.31	1.21
Feb	10.03	1.40	4.13	7.48	7.13	3.50	7.28	0.52	1.27	3.65	3.25	1.24
Mar	10.10	1.46	4.38	7.44	7.10	3.50	7.32	0.57	1.23	3.68	3.26	1.27
Apr	9.83	1.43	4.07	7.41	7.08	3.50	7.21	0.40	1.20	3.65	3.24	1.11
May	9.79	1.42	4.10	7.38	7.06	3.50	7.28	0.47	1.22	3.64	3.22	0.82
Jun	9.76	1.58	3.82	7.31	6.96	3.50	7.24	0.64	1.20	3.63	3.18	0.62
Jul	9.43	1.29	4.02	7.33	7.02	3.50	7.24	0.57	1.22	3.62	3.19	0.52

4.2 TREASURY BILLS & MONEY MARKET RATES

(end of period, in percent)

Spread Between 3 month TB's yield & Libor 3 month

	Jan	Feb	Mar	Apr	May	June	July	Aug	Sep	Oct	Nov	Dec
2006	0.61	0.46	0.30	0.15	0.03	-0.16	-0.28	-0.20	-0.16	-0.15	-0.15	-0.14
2007	-0.14	-0.14	-0.13	-0.13	-0.14	-0.14	-0.14	-0.26	-0.28	0.07	0.26	0.24
2008	1.30	2.13	2.44	2.43	2.53	2.45	2.43	2.41	2.10	1.16	2.90	3.27
2009	3.91	3.88	3.80	3.91	4.14	4.32	4.42					

Interest Rates on Treasury Bills *

Period	3 months		6 months		12 months		24 months	36 months	Repo Rate
	Discount	Yield	Discount	Yield	Discount	Yield	Coupon Rate	Coupon Rate	
2006	5.15	5.22	6.99	7.24	7.19	7.75	8.50	9.32	12.00
2007	5.15	5.22	6.99	7.24	7.19	7.75	8.50	9.32	12.00
2008									
Jun	5.15	5.22	6.97	7.22	7.19	7.75	8.46	9.26	12.00
Jul	5.15	5.22	6.97	7.22	7.18	7.73	8.40	9.12	12.00
Dec	5.04	5.10	6.86	7.10	7.05	7.58	8.26	9.00	12.00
2009									
Jun	4.88	4.94	6.40	6.61	6.45	6.89	7.56	8.52	12.00
Jul	4.88	4.94	6.22	6.42	6.23	6.64	7.30	8.20	12.00

* In March 2005, a 4 and 5 years treasury bills have been issued at a coupon rate of 10.3 and 11.3 per cent respectively.

5.1 BANKS CLEARING IN LEBANESE POUNDS *(number in thousands, value in billions of L.L.)*

Branch	BEIRUT		JOUNIEH		TRIPOLI		SAIDA		ZAHLE		TYR		TOTAL	
	No.	Value	No.	Value	No.	Value	No.	Value	No.	Value	No.	Value	No.	Value
2008	2,550.7	11,702.6	306.7	793.7	167.3	549.8	93.4	335.8	141.4	377.8	118.1	331.7	3,377.5	14,091.4
Feb	200.9	894.0	24.1	65.8	13.2	42.5	7.2	24.4	9.6	23.2	11.6	32.1	266.6	1,082.0
Mar	211.1	929.5	25.8	61.2	14.4	49.9	7.7	25.5	10.8	28.1	11.9	35.3	281.6	1,129.6
Apr	214.0	942.8	25.6	67.8	13.8	45.9	7.7	28.2	10.8	26.2	9.3	26.8	281.3	1,137.7
May	216.5	918.0	27.8	72.9	15.2	49.0	8.1	30.0	12.0	30.1	10.2	29.3	289.9	1,129.3
Jun	216.0	992.1	26.3	74.6	13.9	44.4	7.8	25.9	11.7	30.1	9.3	24.3	285.0	1,191.5
Jul	228.3	1,066.3	28.0	64.4	14.7	48.1	8.7	31.5	14.1	39.6	10.4	28.8	304.2	1,278.7
Aug	209.5	970.4	25.4	64.5	13.4	42.4	8.0	28.2	13.1	35.1	9.3	23.5	278.7	1,164.2
Sep	209.3	943.8	24.4	56.1	13.5	46.5	7.7	30.7	12.6	36.3	9.1	26.7	276.6	1,140.0
Oct	223.0	1,064.9	26.8	73.1	14.5	46.5	8.2	30.1	13.2	37.9	9.6	26.2	295.3	1,278.7
Nov	199.6	960.4	23.0	60.3	13.3	43.7	7.1	29.2	11.3	32.4	8.4	26.0	262.7	1,151.9
Dec	208.1	1,057.0	24.5	67.8	13.3	46.9	7.2	26.1	11.3	31.2	8.3	24.0	272.7	1,253.0
2009														
Jan	214.2	1,176.2	24.0	76.3	14.6	57.3	7.8	28.0	11.4	31.8	8.4	26.9	280.4	1,396.6
Feb	189.3	1,050.8	21.4	58.5	12.5	45.7	6.8	25.7	10.0	24.5	7.6	23.0	247.6	1,228.2
Mar	214.4	1,143.7	24.4	76.4	14.3	52.4	7.7	27.3	10.9	29.7	8.5	24.9	280.2	1,354.4
Apr	200.1	1,012.3	22.9	62.9	14.0	53.7	7.7	29.5	10.7	25.7	8.3	27.0	263.7	1,211.0
May	219.6	1,167.7	23.7	76.3	14.9	57.5	7.7	28.3	11.2	32.4	8.5	37.2	285.6	1,399.4
Jun	214.6	1,118.9	23.4	62.4	14.5	51.1	7.7	28.8	11.5	29.9	8.5	25.0	280.2	1,315.9
Jul	233.1	1,304.9	25.3	81.9	15.9	65.9	7.9	29.3	13.2	35.4	9.5	32.0	304.9	1,549.5

5.2 BANKS CLEARING IN FOREIGN CURRENCIES
(number in unit, value in thousands of US dollars)

	May-08		Jun-08		Jul-08		May-09		Jun-09		Jul-09	
	No.	Value	No.	Value	No.	Value	No.	Value	No.	Value	No.	Value
Beirut	519526	2914540	522320	3405315	579419	3619242	576701	2933657	576855	3076236	633445	3483099
Pound Sterling	207	6526	165	3323	161	2649	245	4136	223	6772	251	6684
US Dollar	513034	2820926	516192	3313690	572932	3526212	569372	2850731	569594	2973932	625655	3380784
Euro	6285	87088	5963	88302	6326	90380	7084	78790	7038	95531	7539	95631
Jounieh	80334	235820	76951	248802	85494	283328	79409	229817	79810	246164	87009	267227
Pound Sterling	7	45	8	605	7	64	7	57	19	175	15	187
US Dollar	79630	231542	76263	242390	84793	278287	78667	225580	78998	241292	86205	261988
Euro	697	4233	680	5807	694	4977	735	4180	793	4696	789	5053
Other Branches	66921	316501	63108	330732	72236	363864	71889	337394	72101	339072	79887	364199
Pound Sterling	5	132	2	43	5	183	22	543	17	761	17	358
US Dollar	66504	308383	62675	321286	71832	355747	71379	330300	71623	332489	79362	355262
Euro	412	7986	431	9403	399	7934	488	6550	461	5823	508	8578
TOTAL	666781	3466862	662379	3984849	737149	4266435	727999	3500867	728766	3661471	800341	4114525
Pound Sterling	219	6703	175	3971	173	2897	274	4736	259	7708	283	7229
US Dollar	659168	3360851	655130	3877365	729557	4160247	719418	3406611	720215	3547713	791222	3998034
Euro	7394	99307	7074	103513	7419	103291	8307	89520	8292	106050	8836	109263

6.1 FINANCING OF IMPORTS AND EXPORTS (in billions of Lebanese Pounds)

Period	Documentary L/Cs						Bills for Collection			
	Credits Opened		Credits Utilized		Outstanding Credits (end of period)		Inward Bills	Outward Bills	Outstanding Bills (end of period)	
	Imports	Exports	Imports	Exports	Imports	Exports	Imports	Exports	Imports	Exports
2008	7,541.7	6,009.0	7,178.8	4,872.5	1,265.0	2,419.6	2,783.1	7,769.4	170.4	587.9
Feb	478.0	313.0	489.2	191.9	1,157.6	1,633.9	231.9	517.5	132.3	432.2
Mar	583.8	396.3	490.4	304.3	1,231.5	1,692.5	241.3	673.7	152.3	455.5
Apr	592.3	331.0	549.9	386.6	1,258.3	1,635.6	248.7	627.7	181.4	461.6
May	596.1	481.5	605.7	338.7	1,214.1	1,769.0	216.0	686.6	160.1	478.8
Jun	856.7	692.8	536.0	687.9	1,521.8	1,765.7	224.6	678.8	154.9	459.6
Jul	839.0	502.1	777.6	490.9	1,555.9	1,734.2	324.3	790.7	191.2	488.1
Aug	594.1	532.4	701.6	331.1	1,424.6	1,907.5	221.1	658.4	178.3	520.7
Sep	722.4	421.1	646.7	416.1	1,484.8	1,882.2	268.6	662.9	178.4	563.8
Oct	599.7	546.9	679.3	422.8	1,364.2	1,937.7	210.8	709.5	182.5	522.0
Nov	548.4	799.3	575.2	506.8	1,301.9	2,229.4	175.4	546.4	137.4	550.2
Dec	467.5	602.5	511.0	421.7	1,265.0	2,419.6	186.9	585.6	170.4	587.9
2009										
Jan	498.2	583.9	569.4	466.2	1,142.5	2,455.3	192.7	638.5	160.4	624.8
Feb	398.9	358.3	459.2	389.7	1,070.3	2,377.2	199.1	595.1	159.9	553.8
Mar	480.0	492.3	501.7	460.1	1,049.4	2,391.1	289.4	623.7	195.4	539.2
Apr	453.2	273.4	418.0	348.1	1,057.7	2,278.7	213.5	662.1	195.1	469.6
May	479.1	326.9	505.5	332.2	1,040.3	2,186.9	240.4	629.4	238.6	382.2
Jun	544.4	458.3	457.4	418.5	1,125.5	2,223.3	196.2	552.0	212.5	531.4
Jul	629.5	545.5	513.2	579.5	1,235.6	2,172.8	279.5	647.2	191.7	517.4

6.2 OUTSTANDING LOCAL CURRENCY PUBLIC DEBT BY TYPE OF DEBT INSTRUMENT (1)
(end of period, in billions of L.L.)

	Dec 2007	Jul 2008	Dec 2008	Apr 2009	May 2009	Jun 2009	Jul 2009
Gross Local Currency debt	31,373.0	34,905.0	39,007.0	39,799.0	39,667.0	39,161.0	40,128.0
1. Long term bonds (2)	28,617.0	33,229.0	36,350.0	36,246.0	36,737.0	36,726.0	37,508.0
- over 24 months bonds	25,999.0	30,245.0	33,332.0	33,357.0	33,798.0	33,843.0	34,650.0
- 24 months bonds	1,927.0	2,173.0	2,052.0	1,999.0	1,997.0	1,882.0	1,912.0
- Coupon interest	691.0	811.0	966.0	890.0	942.0	1,001.0	946.0
2. Short term bonds (2)	2,288.0	1,226.0	2,197.0	3,118.0	2,489.0	2,027.0	2,221.0
- 12 months bonds	529.0	397.0	676.0	1,201.0	1,240.0	1,272.0	1,399.0
- 6 months bonds	1,750.0	825.0	1,234.0	1,345.0	794.0	601.0	727.0
- 3 months bonds	9.0	4.0	287.0	572.0	455.0	154.0	95.0
3. Loans	468.0	450.0	460.0	435.0	441.0	408.0	399.0

(1) Source : Ministry of Finance
(2) All TBs are reported including accrued interest.

7. EXCHANGE RATES OF MAJOR FOREIGN CURRENCIES

(in Lebanese Pounds)

Period	US Dollar	Euro	Swiss Franc	Pound Sterling	Japanese Yen (100)	Canadian Dollar	Silver (Ounce)	Gold (Ounce)
Period Average								
2008								
Jul	1,507.50	2,377	1,468	2,996	1,410	1,488	27,163	1,414,617
Dec	1,507.50	2,040	1,326	2,248	1,659	1,224	15,595	1,241,639
2009								
Mar	1,507.50	1,972	1,306	2,142	1,543	1,195	19,788	1,396,286
Apr	1,507.50	1,993	1,315	2,216	1,527	1,227	18,968	1,350,356
May	1,507.50	2,054	1,359	2,322	1,559	1,307	21,199	1,398,357
Jun	1,507.50	2,114	1,396	2,469	1,562	1,342	22,123	1,429,153
Jul	1,507.50	2,123	1,397	2,466	1,596	1,342	20,159	1,409,404
End of Period								
2008								
Jul	1,507.50	2,353	1,439	2,985	1,393	1,474	26,389	1,371,448
Dec	1,507.50	2,137	1,428	2,186	1,670	1,226	16,311	1,312,882
2009								
Mar	1,507.50	2,010	1,324	2,161	1,532	1,205	19,763	1,385,091
Apr	1,507.50	2,002	1,327	2,235	1,536	1,265	19,002	1,341,750
May	1,507.50	2,113	1,394	2,423	1,563	1,366	23,464	1,466,722
Jun	1,507.50	2,129	1,396	2,498	1,571	1,306	21,037	1,416,146
Jul	1,507.50	2,124	1,385	2,494	1,577	1,394	20,434	1,409,211

8. OUTSTANDING PUBLIC DEBT BY TYPE OF HOLDER (1)

(end of period)

	Dec 2007	Jul 2008	Dec 2008	May 2009	Jun 2009	Jul 2009
I. Gross Local Currency Debt (bns of L.L.)	31,373.0	34,905.0	39,007.0	39,667.0	39,161.0	40,128.0
1.1 Central Bank	9,052.0	8,362.0	8,781.0	10,467.0	10,530.0	10,470.0
Treasury Bills Portfolio (2)	8647.0	7,989.0	8,419.0	10,142.0	10,204.0	10,158.0
Loans to Public Entities	405.0	373.0	362.0	325.0	326.0	312.0
1.2 Banks	16,847.0	20,919.0	24,320.0	22,920.0	22,255.0	22,912.0
Treasury Bills (4)	16,784.0	20,842.0	24,222.0	22,804.0	22,173.0	22,825.0
Loans to Public Entities	63.0	77.0	98.0	116.0	82.0	87.0
1.3 Non Banking System TBs (3)	5,474.0	5,624.0	5,906.0	6,280.0	6,376.0	6,746.0
II. Public Sector Deposits	4,527.0	6,224.0	8,326.0	7,476.0	6,559.0	7,335.0
III. Net Local Currency Debt	26,846.0	28,681.0	30,681.0	32,191.0	32,602.0	32,793.0
IV. Foreign Currency Debt (mns of USD)	21,212.0	21,503.0	21,148.0	21,433.0	21,350.0	21,294.0
V. Net Total Debt (bns of L.L.)	58,823.0	61,097.0	62,562.0	64,501.0	64,787.0	64,894.0

(1) Source : Ministry of Finance, quasi-final figures subject to revision.

(2) All TBs are reported including accrued interest.

(3) Since TBs' Market has expanded, it became hard to identify holdings of TBs by non-institutional non-resident, therefore all TBs in LL are considered as part of local currency debt, and those in USD as part of foreign currency debt.

(4) Starting September 1999, discounted public bills without recall, are included in these figures with TBs.

9.1 LISTED SHARES AT THE BEIRUT STOCK EXCHANGE

(July 2009)

Listed Shares	Traded Volume	% of Volume	Traded Value (\$)	% of Value	Closing Price (\$)	Average Price (\$)
Solidere "A"	3,959,585	60.98	100,040,319	65.37	25.99	25.27
Solidere "B"	1,240,556	19.11	30,961,854	20.23	25.90	24.96
Banque Libanaise pour le Commerce	37	0.00	70	0.00	1.90	1.89
Audi - Saradar Bank	176,889	2.72	10,780,411	7.04	61.05	60.94
Audi - Saradar Bank GDR	16,986	0.26	1,140,918	0.75	67.10	67.17
Audi Bank (Preferred Shares "D")	4,389	0.07	440,037	0.29	100.30	100.26
Bank of Beirut	8,286	0.13	152,487	0.10	18.40	18.40
Bank of Beirut (Preferred shares "C")	3,040	0.05	78,280	0.05	25.75	25.75
Bank of Beirut (Preferred shares "D")	6,600	0.10	168,675	0.11	25.50	25.56
Byblos Bank	583,610	8.99	1,131,214	0.74	1.95	1.94
Byblos Bank GDR	3,009	0.05	267,753	0.17	91.90	88.98
Byblos Bank "Preferred Shares 2008"	1,850	0.03	181,115	0.12	97.90	97.90
Byblos Bank "Priority Shares"	361,892	5.57	690,891	0.45	1.98	1.91
BEMO	31,852	0.49	141,119	0.09	4.20	4.43
BEMO Bank "Preferred Shares"	1,150	0.02	106,850	0.07	95.00	92.91
BLOM GDR	55,223	0.85	4,245,553	2.77	80.20	76.88
BLOM	12,160	0.19	891,885	0.58	74.00	73.35
BLOM "Preferred Shares 2004"	4,112	0.06	411,073	0.27	100.50	100.70
BLOM "Preferred Shares 2005"	8,985	0.14	916,142	0.60	101.50	101.96
RYMCO	0	0.00	0	0.00	3.15	-
HOLCIM Liban	11,476	0.18	148,415	0.10	12.36	12.93
Société de Ciments Blancs "B"	0	0.00	0	0.00	2.10	-
Société de Ciments Blancs "N"	0	0.00	0	0.00	1.90	-
Uniceramic "A"	0	0.00	0	0.00	0.06	-
Uniceramic "C"	0	0.00	0	0.00	0.10	-
Beirut Preferred Fund	1,300	0.02	135,850	0.09	104.50	104.50
Total	6,492,987	100	153,033,910	100	-	-

9.2 CERTIFICATES OF DEPOSIT

	Maturity	Closing June 2009		Closing July 2009	
		Price	Yield	Price	Yield
Audi Investment Bank (10 years)	08/05/2010	104.50	5.78%	104.50	5.78%
Banque de la Méditerranée (5 years)	19/07/2010	101.25	6.49%	101.25	6.49%
Banque de la Méditerranée (7 years)	14/12/2012	96.00	8.97%	100.50	7.45%
Banque du Liban (10 years)	25/04/2015	109.75	7.87%	110.25	7.75%

9.3 EUROBONDS

	Maturity	Closing June 2009			Closing July 2009		
		Price	Yield	Spread	Price	Yield	Spread
10 years (Subordinated Notes) Byblos Bank	01/07/2012	101.88	8.30	576	101.88	8.30	579

9.4 DIFFERENT FINANCIAL INSTRUMENTS

	Closing June 2009	Average Price	Closing July 2009	Average Price	Change (%)
GDR (Solidere)	23.69 - 24.00 \$	23.85	25.21 - 25.35 \$	25.28	6.00
GDR (BLOM)	71.10 - 73.00 \$	72.10	80.00 - 82.00 \$	81.00	12.34
GDR (Audi - Saradar)	66.00 - 72.00 \$	69.00	65.60 - 68.00 \$	66.80	-3.19
GDR (Byblos)	89.00 - 93.00 \$	91.00	93.00 - 97.00 \$	95.00	4.40



BANQUE DU LIBAN